

GEF Vision™

Production monitoring and load control system
for solar power plants

GEF Vision™ application helps you utilise solar energy
smoothly, efficiently and economically.



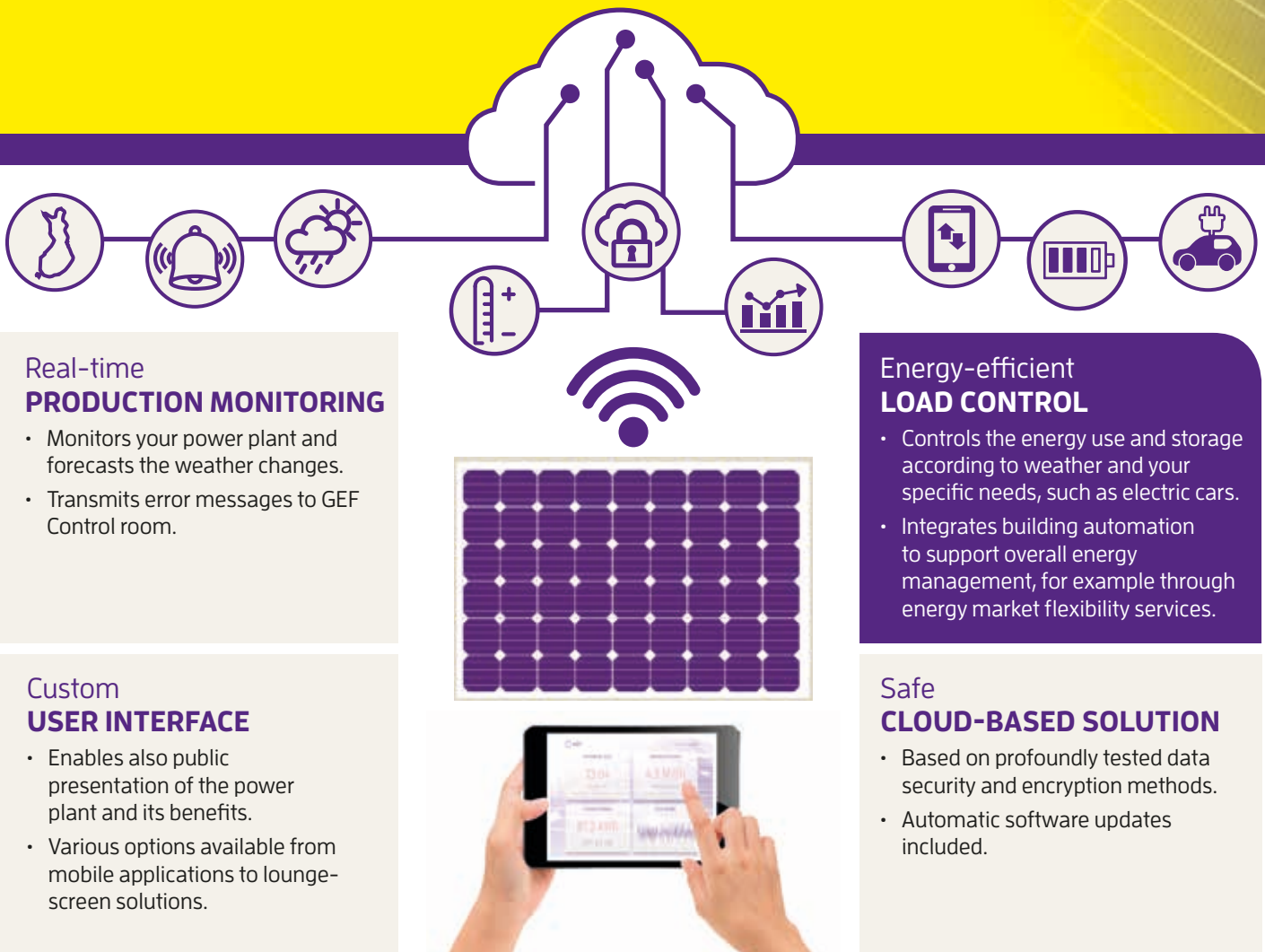
GEF

Sun powered.
Cloud based.

Here comes the sun!

The cloud-based GEF Vision™ application enables efficient deploying and utilisation of clean solar energy. The system proactively controls energy consumption according to the power production and your usage needs, keeping it always smart and economical.

Manufacturer-independent GEF Vision™ supports all generic inverter models and can be integrated into your existing solar power plant. This easy-to-use application provides you with real-time information about energy production, consumption, storage and the achieved savings.



Real-time PRODUCTION MONITORING

- Monitors your power plant and forecasts the weather changes.
- Transmits error messages to GEF Control room.

Custom USER INTERFACE

- Enables also public presentation of the power plant and its benefits.
- Various options available from mobile applications to lounge-screen solutions.

Energy-efficient LOAD CONTROL

- Controls the energy use and storage according to weather and your specific needs, such as electric cars.
- Integrates building automation to support overall energy management, for example through energy market flexibility services.

Safe CLOUD-BASED SOLUTION

- Based on profoundly tested data security and encryption methods.
- Automatic software updates included.

GEF Vision™ meets your changing needs. It enables, for example, the use of integrated battery systems or joining demand-response markets.

GreenEnergy Finland Oy is the leading Finnish company specialised in solar power and energy management. Follow us and read more about GEF Vision™ and our other services.



GreenEnergy Finland Oy
Laserkatu 6, FI-53850 Lappeenranta, FINLAND
Mikkelänkallio 3, FI-02770 Espoo, FINLAND
info@gef.fi | www.gef.fi